

*NOBU*

RESIDENCES

AL MARJAN ISLAND

UNIT SPECS



# FLOOR 6-15

## 1 BEDROOM – TYPE A

TOTAL AREA: 89 M<sup>2</sup>

INTERNAL: 74 M<sup>2</sup>

EXTERNAL: 15 M<sup>2</sup>

### ROOM SIZES

MASTER BEDROOM  
4,3 X 3,4 m

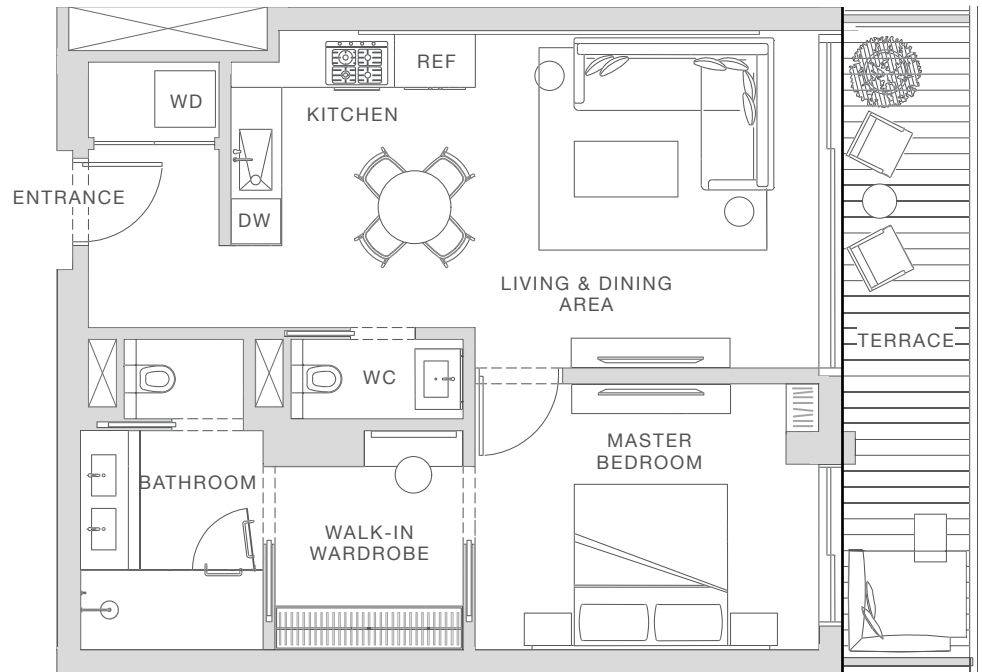
LIVING AREA  
4,3 X 4,2 m

KITCHEN & DINING AREA  
3 X 3,7 m

BATHROOM  
2,3 X 3,9 m

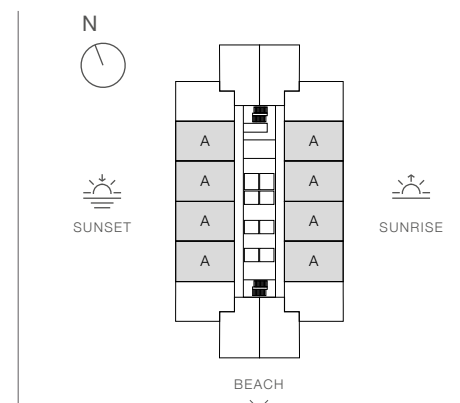
### KEY

WD - WASHER / DRYER  
REF - REFRIGERATOR  
DW - DISHWASHER  
WC - TOILET



Any concept renderings as shown for the residences are representative only and do not represent the actual size, features, specifications, fittings and furnishings, and the Developer reserves the right to make changes or substitutions of equal or better quality for any features, materials and equipment which are included with the unit. All materials, dimensions and drawings are approximate only. Information is subject to change without notice, at developer's absolute discretion. Actual area may vary from the stated area.

Nobu Residences Al Marjan Island are not owned, developed or sold by Nobu Hospitality LLC or its affiliates (Nobu Hotels). The developer uses the Nobu Hospitality trademarks and tradenames under a license from Nobu Hospitality LLC, which has not confirmed the accuracy of any of the statements or representations made herein.



# FLOOR 6-15

## 1 BEDROOM – TYPE B

TOTAL AREA: 84 M<sup>2</sup>

INTERNAL: 68 M<sup>2</sup>

EXTERNAL: 16 M<sup>2</sup>

### ROOM SIZES

MASTER BEDROOM  
3,7 X 3,6 m

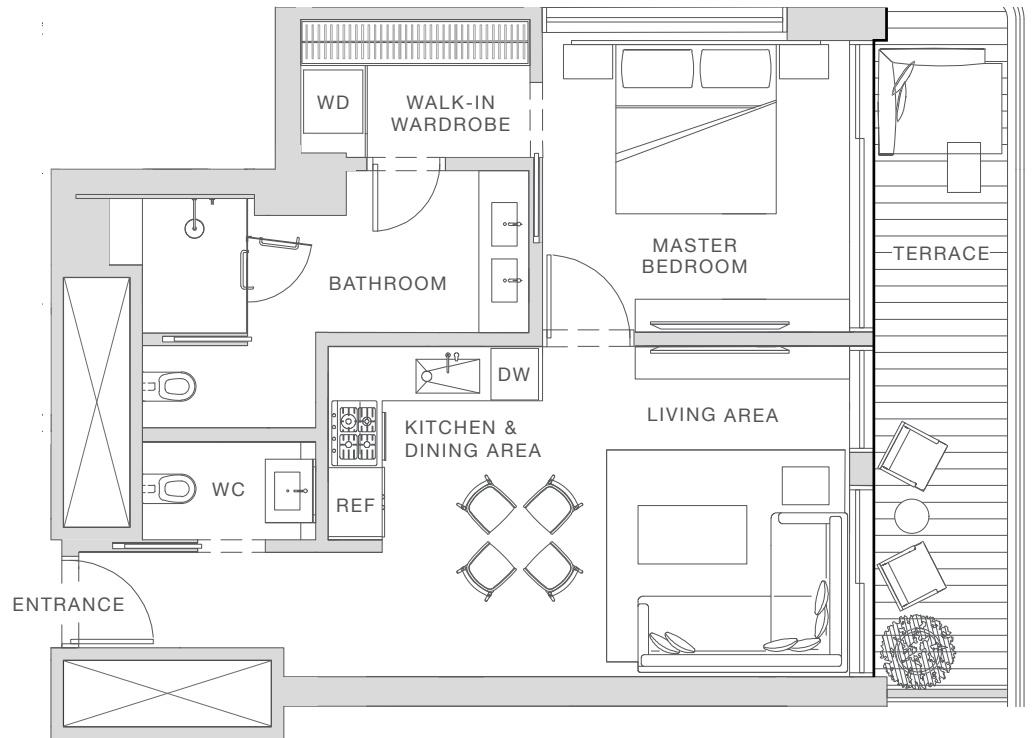
LIVING AREA  
3,7 X 4 m

BATHROOM  
2 X 4,7 m

KITCHEN & DINING AREA  
3 X 4 m

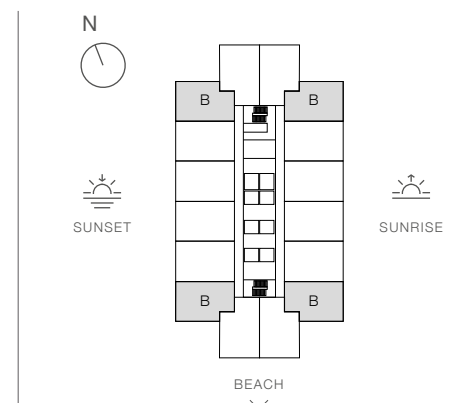
### KEY

WD - WASHER / DRYER  
REF - REFRIGERATOR  
DW - DISHWASHER  
WC - TOILET



Any concept renderings as shown for the residences are representative only and do not represent the actual size, features, specifications, fittings and furnishings, and the Developer reserves the right to make changes or substitutions of equal or better quality for any features, materials and equipment which are included with the unit. All materials, dimensions and drawings are approximate only. Information is subject to change without notice, at developer's absolute discretion. Actual area may vary from the stated area.

Nobu Residences Al Marjan Island are not owned, developed or sold by Nobu Hospitality LLC or its affiliates (Nobu Hotels). The developer uses the Nobu Hospitality trademarks and tradenames under a license from Nobu Hospitality LLC, which has not confirmed the accuracy of any of the statements or representations made herein.



# FLOOR 6-15

## 1 BEDROOM – TYPE C

TOTAL AREA: 91 M<sup>2</sup>

INTERNAL: 72 M<sup>2</sup>

EXTERNAL: 19 M<sup>2</sup>

### ROOM SIZES

MASTER BEDROOM  
3,3 X 4,2 m

LIVING AREA  
4 X 3,5 m

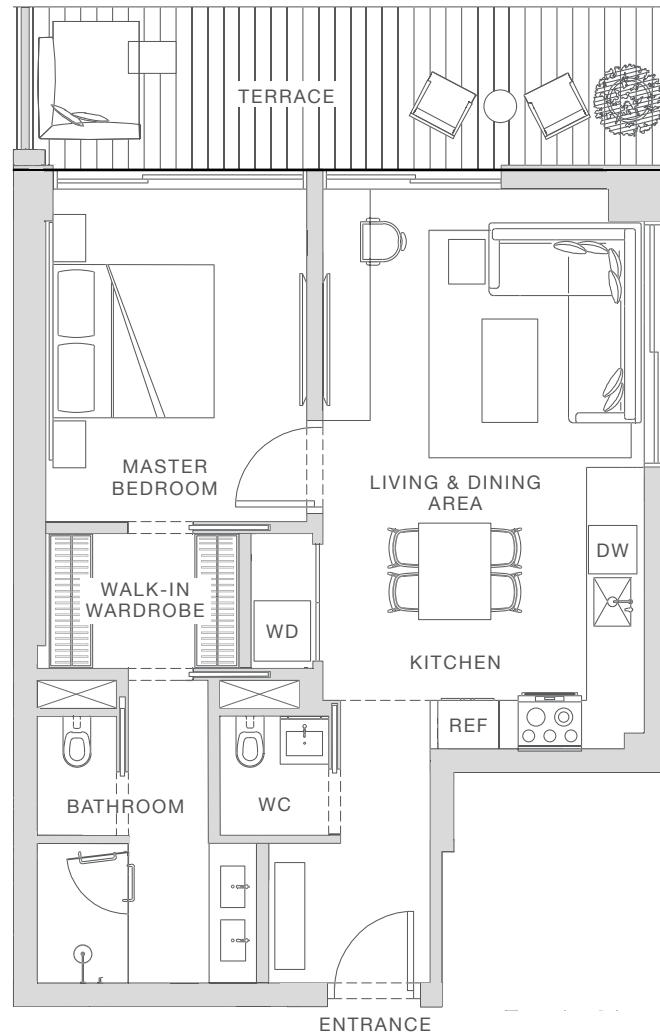
KITCHEN & DINING AREA  
4 X 3,5 m

BATHROOM  
2,2 X 3,8 m

WALK-IN WARDROBE  
2,4 X 1,7 m

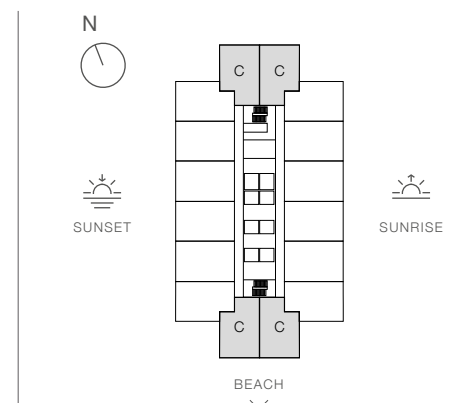
### KEY

WD - WASHER / DRYER  
REF - REFRIGERATOR  
DW - DISHWASHER  
WC - TOILET



Any concept renderings as shown for the residences are representative only and do not represent the actual size, features, specifications, fittings and furnishings, and the Developer reserves the right to make changes or substitutions of equal or better quality for any features, materials and equipment which are included with the unit. All materials, dimensions and drawings are approximate only. Information is subject to change without notice, at developer's absolute discretion. Actual area may vary from the stated area.

Nobu Residences Al Marjan Island are not owned, developed or sold by Nobu Hospitality LLC or its affiliates (Nobu Hotels). The developer uses the Nobu Hospitality trademarks and tradenames under a license from Nobu Hospitality LLC, which has not confirmed the accuracy of any of the statements or representations made herein.



# FLOOR 1-8

## 2 BEDROOM – TYPE A

TOTAL AREA: 147 M<sup>2</sup>

INTERNAL: 131 M<sup>2</sup>

EXTERNAL: 16 M<sup>2</sup>

### ROOM SIZES

MASTER BEDROOM  
3,5 X 4 m

MASTER BATHROOM  
2,8 X 5 m

GUEST BEDROOM  
4,6 X 3,7 m

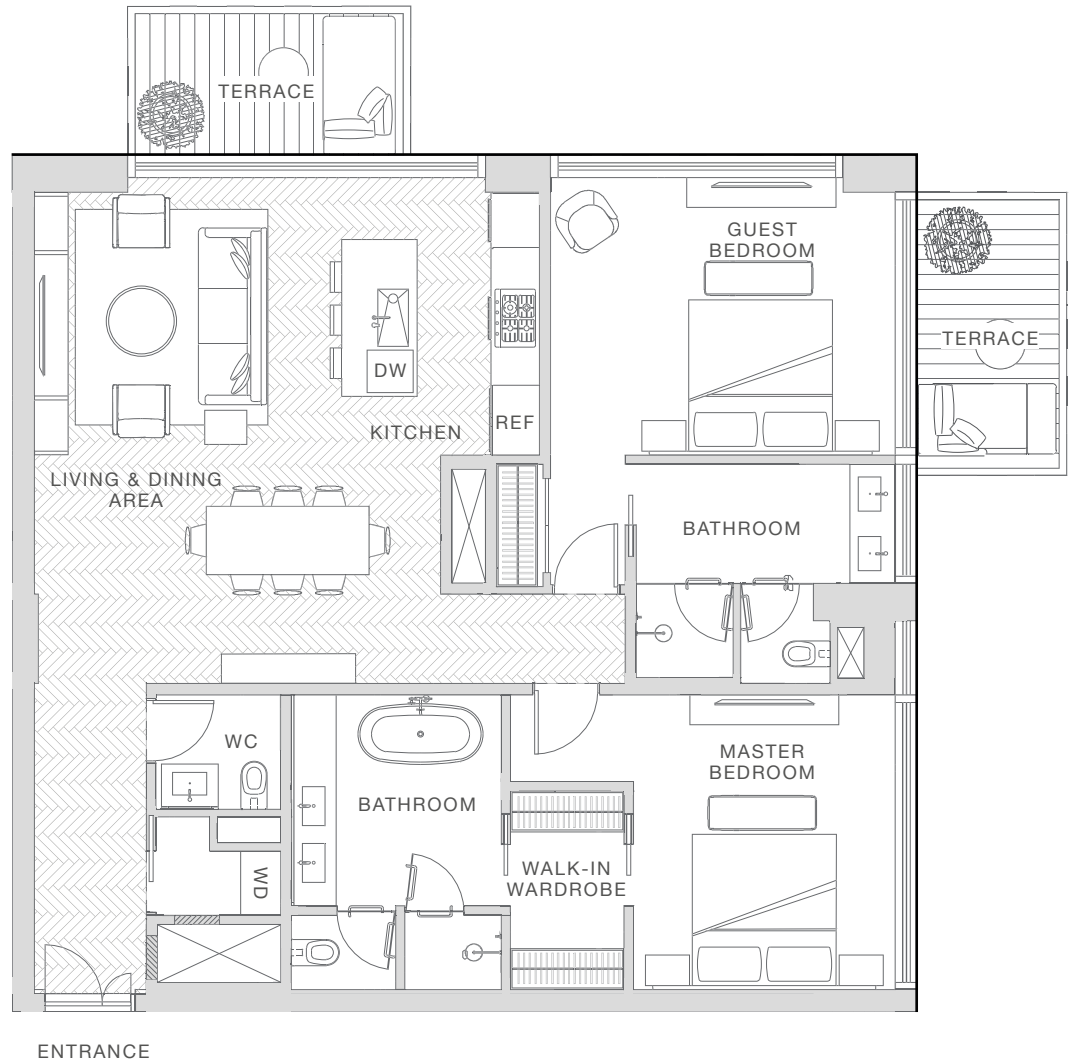
LIVING AREA  
4,1 X 3,7 m

KITCHEN AREA  
2 X 3,7 m

DINING AREA  
5,4 X 3 m

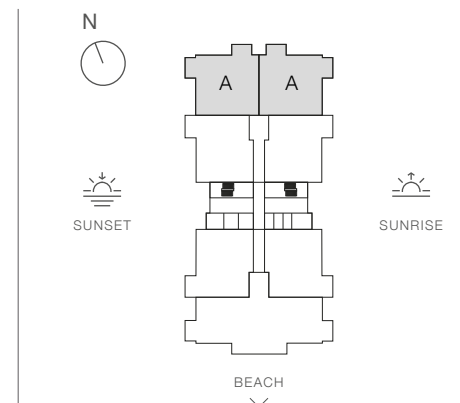
### KEY

WD - WASHER / DRYER  
REF - REFRIGERATOR  
DW - DISHWASHER  
WC - TOILET



Any concept renderings as shown for the residences are representative only and do not represent the actual size, features, specifications, fittings and furnishings, and the Developer reserves the right to make changes or substitutions of equal or better quality for any features, materials and equipment which are included with the unit. All materials, dimensions and drawings are approximate only. Information is subject to change without notice, at developer's absolute discretion. Actual area may vary from the stated area.

Nobu Residences Al Marjan Island are not owned, developed or sold by Nobu Hospitality LLC or its affiliates (Nobu Hotels). The developer uses the Nobu Hospitality trademarks and tradenames under a license from Nobu Hospitality LLC, which has not confirmed the accuracy of any of the statements or representations made herein.



# FLOOR 1-8

## 2 BEDROOM – TYPE B

TOTAL AREA: 136 M<sup>2</sup>

INTERNAL: 128 M<sup>2</sup>

EXTERNAL: 8 M<sup>2</sup>

### ROOM SIZES

MASTER BEDROOM  
4,4 X 4,3 m

MASTER BATHROOM  
4 X 3,9 m

WALK-IN WARDROBE  
1,8 X 2,4 m

GUEST BEDROOM  
4,4 X 3,6 m

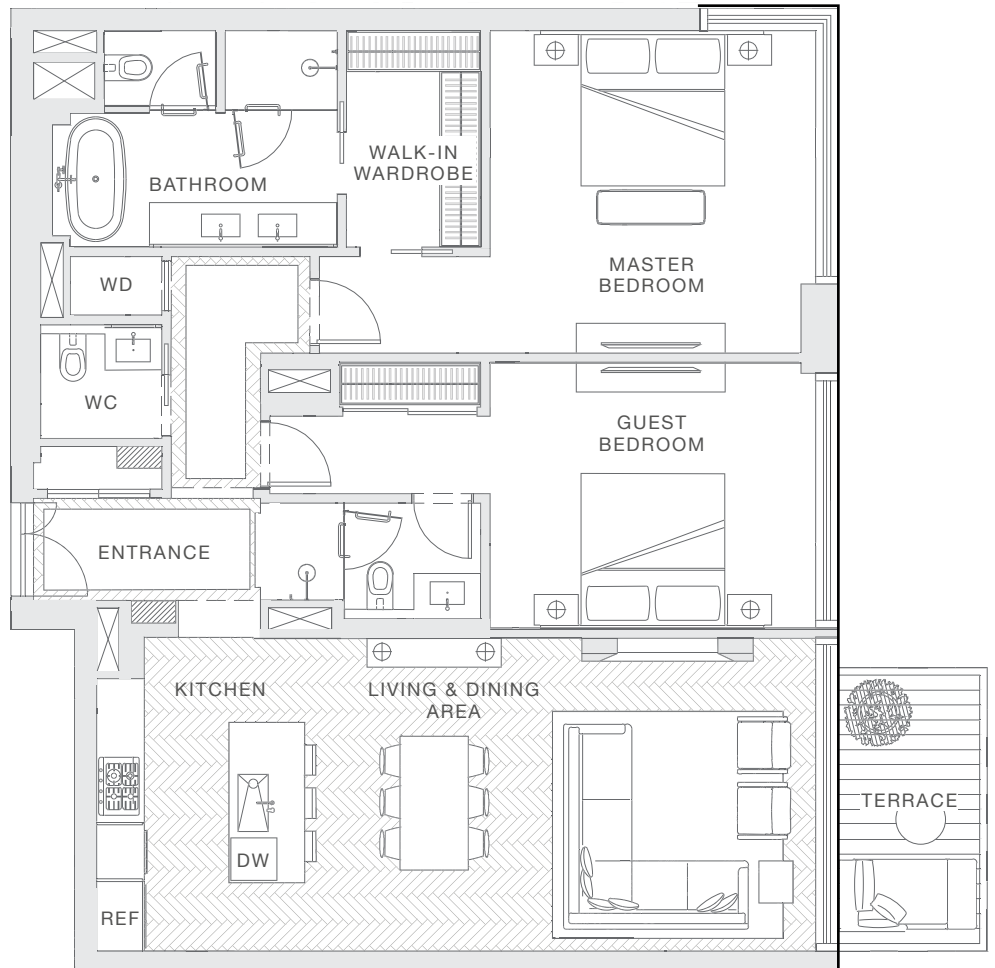
LIVING AREA  
3,5 X 4,2 m

DINING AREA  
3,3 X 4,2 m

KITCHEN  
2,8 X 4,2 m

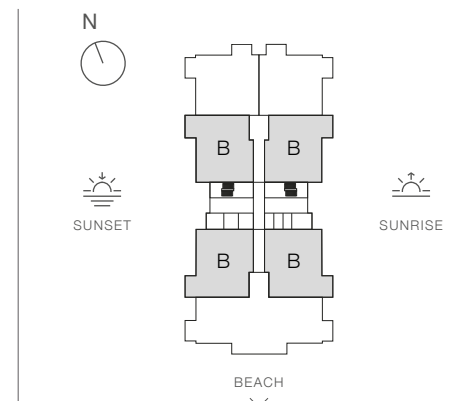
### KEY

WD - WASHER / DRYER  
REF - REFRIGERATOR  
DW - DISHWASHER  
WC - TOILET



Any concept renderings as shown for the residences are representative only and do not represent the actual size, features, specifications, fittings and furnishings, and the Developer reserves the right to make changes or substitutions of equal or better quality for any features, materials and equipment which are included with the unit. All materials, dimensions and drawings are approximate only. Information is subject to change without notice, at developer's absolute discretion. Actual area may vary from the stated area.

Nobu Residences Al Marjan Island are not owned, developed or sold by Nobu Hospitality LLC or its affiliates (Nobu Hotels). The developer uses the Nobu Hospitality trademarks and tradenames under a license from Nobu Hospitality LLC, which has not confirmed the accuracy of any of the statements or representations made herein.



# FLOOR 1-8

## 3 BEDROOM

TOTAL AREA: 237 M<sup>2</sup>

INTERNAL: 200 M<sup>2</sup>

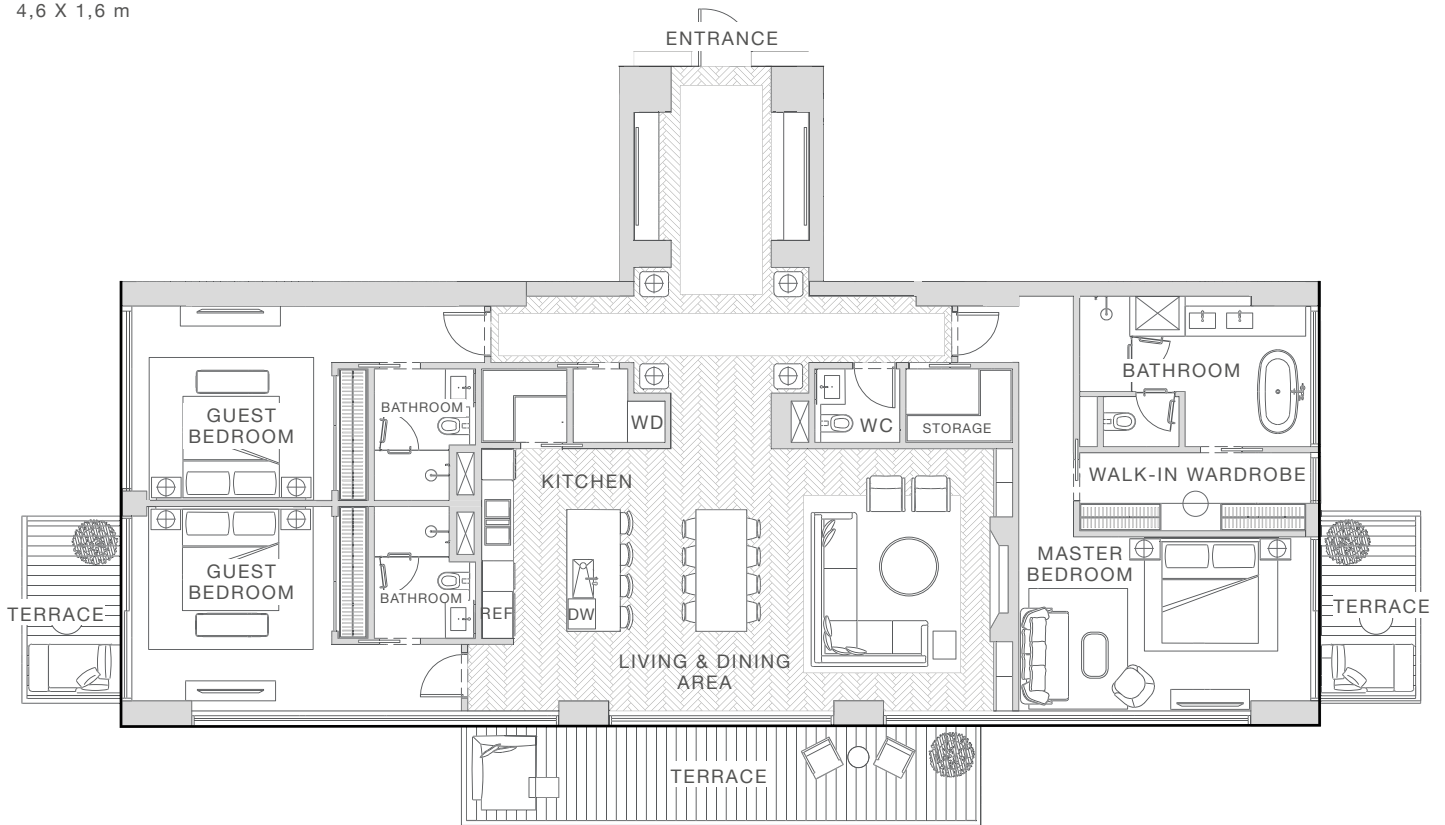
EXTERNAL: 37 M<sup>2</sup>

### ROOM SIZES

ENTRANCE FOYE 3,5 X 4,6 m	GUEST BEDROOM 4 X 4 m
MASTER BEDROOM 5,7 X 3,6 m	LIVING & DINING AREA 6,5 X 5,3 m
MASTER BATHROOM 4,6 X 2,6 m	KITCHEN 3,7 X 5,3 m
WALK-IN WARDROBE 4,6 X 1,6 m	

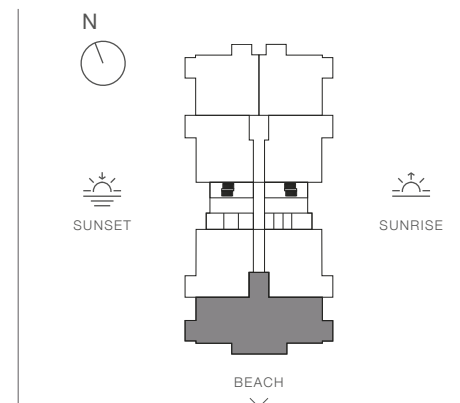
### KEY

WD - WASHER / DRYER  
REF - REFRIGERATOR  
DW - DISHWASHER  
WC - TOILET



Any concept renderings as shown for the residences are representative only and do not represent the actual size, features, specifications, fittings and furnishings, and the Developer reserves the right to make changes or substitutions of equal or better quality for any features, materials and equipment which are included with the unit. All materials, dimensions and drawings are approximate only. Information is subject to change without notice, at developer's absolute discretion. Actual area may vary from the stated area.

Nobu Residences Al Marjan Island are not owned, developed or sold by Nobu Hospitality LLC or its affiliates (Nobu Hotels). The developer uses the Nobu Hospitality trademarks and tradenames under a license from Nobu Hospitality LLC, which has not confirmed the accuracy of any of the statements or representations made herein.



*NOBU*  
RESIDENCES  
AL MARJAN ISLAND





# NOBU RESIDENCE

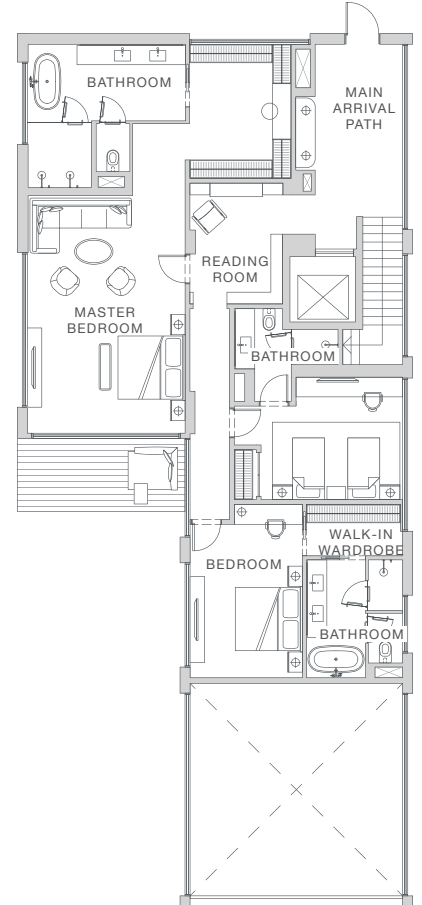
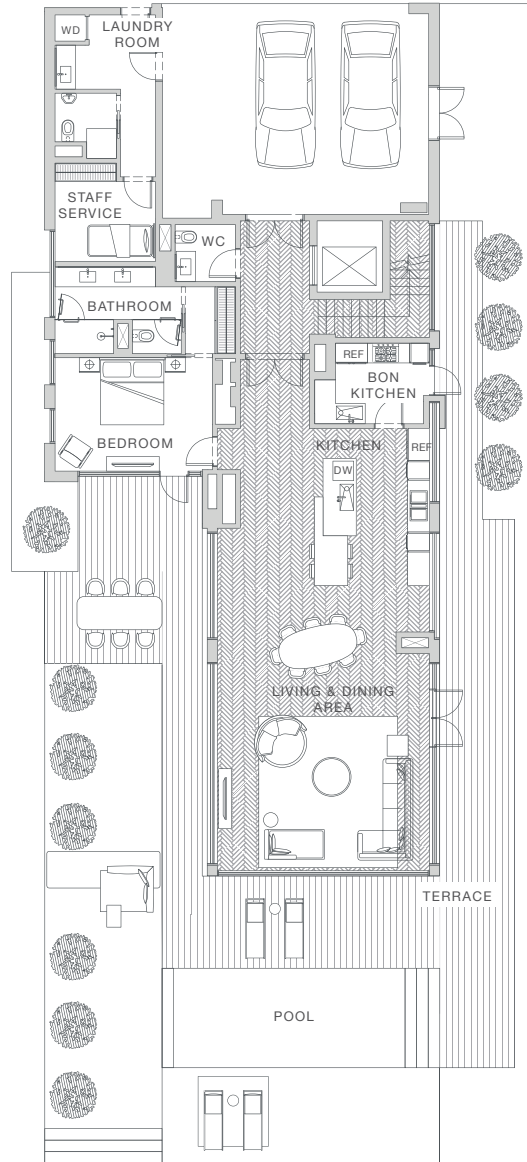
## VILLA 1-4

**NOBU**  
RESIDENCES  
AL MARJAN ISLAND

TOTAL AREA: 447 M<sup>2</sup>

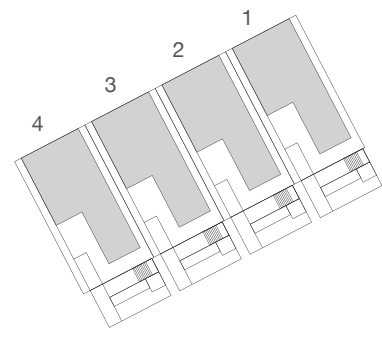
INTERNAL: 436 M<sup>2</sup>

EXTERNAL: 11 M<sup>2</sup>



Any concept renderings as shown for the residences are representative only and do not represent the actual size, features, specifications, fittings and furnishings, and the Developer reserves the right to make changes or substitutions of equal or better quality for any features, materials and equipment which are included with the unit. All materials, dimensions and drawings are approximate only. Information is subject to change without notice, at developer's absolute discretion. Actual area may vary from the stated area.

Nobu Residences Al Marjan Island are not owned, developed or sold by Nobu Hospitality LLC or its affiliates (Nobu Hotels). The developer uses the Nobu Hospitality trademarks and tradenames under a license from Nobu Hospitality LLC, which has not confirmed the accuracy of any of the statements or representations made herein.



BEACH  
∨

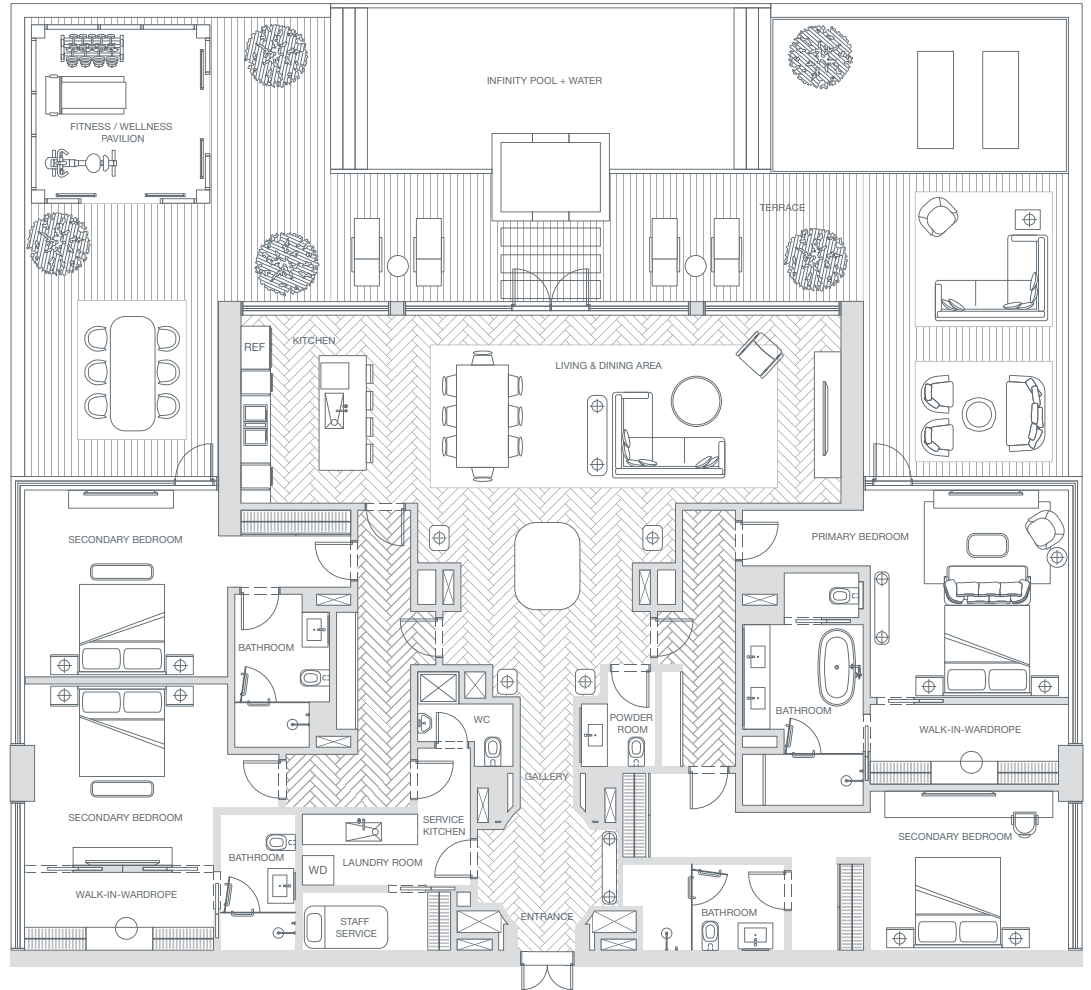
# UNIT B902 – FLOOR 9

## PENTHOUSE

TOTAL AREA: 557 M<sup>2</sup>

INTERNAL: 294 M<sup>2</sup>

EXTERNAL: 263 M<sup>2</sup>



Any concept renderings as shown for the residences are representative only and do not represent the actual size, features, specifications, fittings and furnishings, and the Developer reserves the right to make changes or substitutions of equal or better quality for any features, materials and equipment which are included with the unit. All materials, dimensions and drawings are approximate only. Information is subject to change without notice, at developer's absolute discretion. Actual area may vary from the stated area.

Nobu Residences Al Marjan Island are not owned, developed or sold by Nobu Hospitality LLC or its affiliates (Nobu Hotels). The developer uses the Nobu Hospitality trademarks and tradenames under a license from Nobu Hospitality LLC, which has not confirmed the accuracy of any of the statements or representations made herein.

